



This is Your UEA

Your Guide
2022 entry



**Teaching Excellence
Framework**

2017–21

UK Top 25

The Times/Sunday Times
2021 and Complete
University Guide 2021

World Top 200

Times Higher
Education World
University Rankings 2021



45 minutes to
the beach
by bus

80 minutes to
Cambridge
by train

2 hours to
London
by train

20 minutes to
**Norwich
Airport**
by car

Contents

Meet the editors	06	Your student experience ...	33
Norwich and Norfolk	09	Where to live	51
Your campus	23	Careers	59
		Research	69

The essentials	81
Course listing	102
Important information	111

Images and descriptions used in this guide may include those which pre-dated Covid-19 mitigations, and may not represent short-term restrictions (including face coverings, social distancing, accommodation bubbles and one-way systems) the University is required to undertake to ensure a Covid-secure environment.



See our full
campus map here:

[uea.ac.uk/about/
campus map](https://uea.ac.uk/about/campus-map)

Meet the editors

Your UEA Guide is edited by our student team.

1 / Adeolu

Outside my Media Studies degree, I am a BAME representative for the Politics society, and I also take part in martial arts.

2 / Alejandra

I'm from Spain, and am studying Art History with Gallery and Museum Studies. I'm the Social Secretary of the Spanish society, and a member of many others.

3 / Ellie

Alongside my History and Politics studies, I am Treasurer of the History society and work part time. I also help on campus tours and open days.

4 / Matthew

I was born in Wales, and I'm currently studying International Relations and Politics. Outside of study, I play rugby and write for the university newspaper.

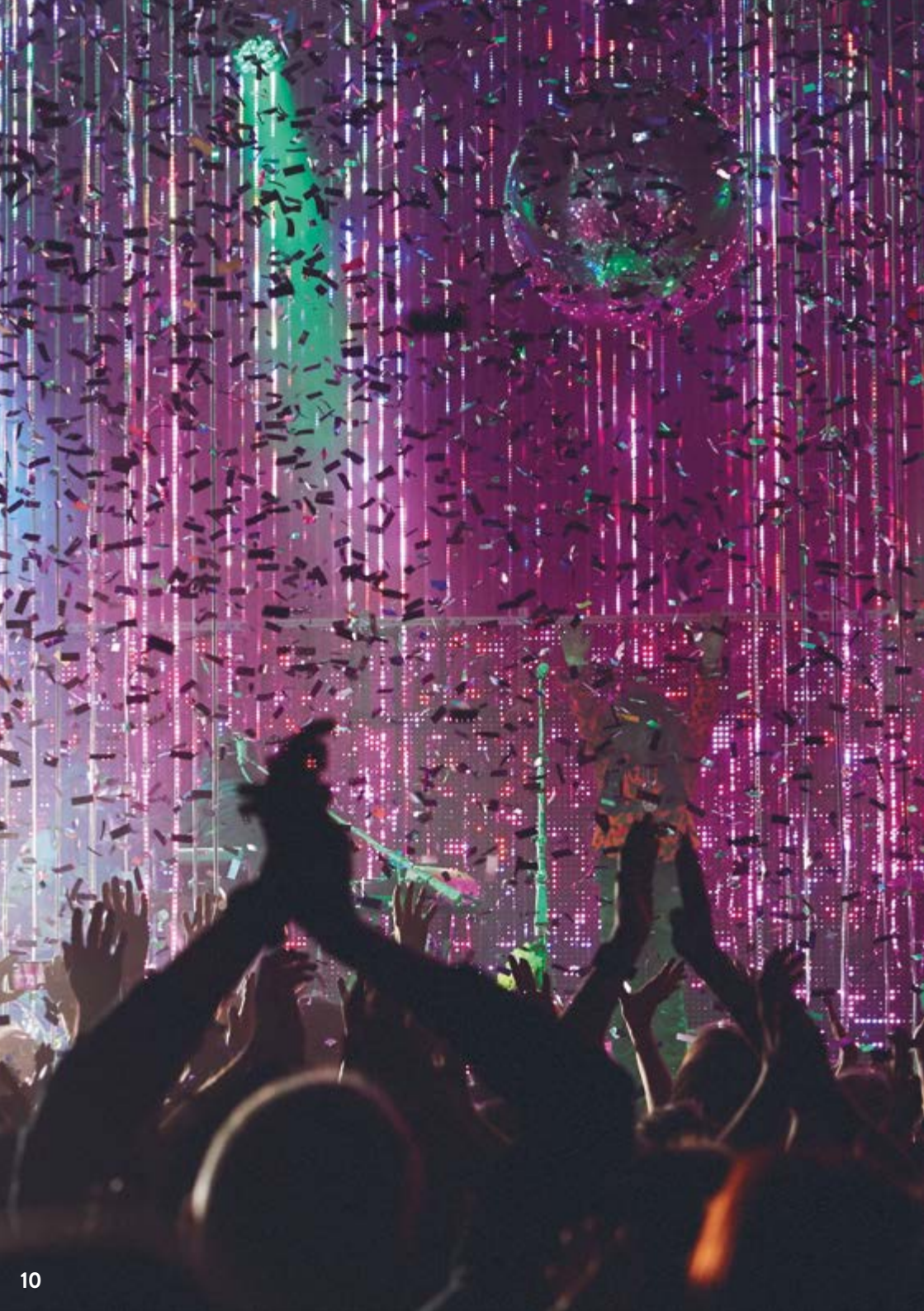
5 / Molly-Rose

I study English Lit with Creative Writing, and work in the SU shop part time. I run a local feminist group and am part of Decolonise Literature, Drama and Creative Writing.

6 / Nyeem

I'm studying a BA in Philosophy and History, and am part of the UEA Boxing committee. I'm also involved in a Newcastle-based heritage project with the Church Conservation Trust.



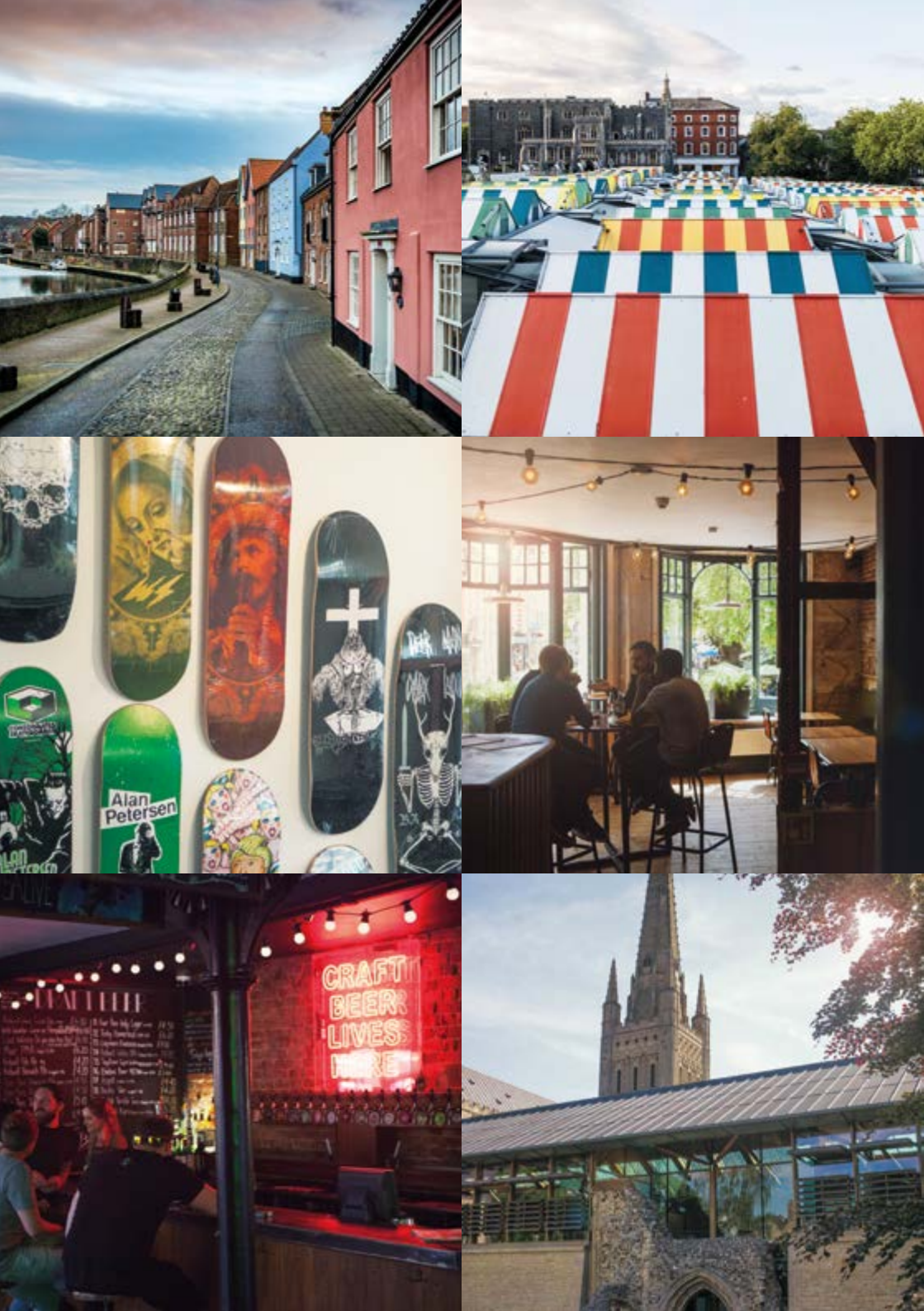


1

Norwich and Norfolk



If you join us in Norfolk, we'll introduce you to some of the UK's most beautiful coastline and countryside. And to Norwich, a city where old and new collide. This is the perfect place to study because it's affordable, friendly, accessible and eclectic. We can't wait to welcome you home.



A city of culture

The best thing about Norwich is the balance it provides between old and new.

Find out more about Norwich and Norfolk:

**[uea.ac.uk/
uea life/norwich
and beyond](http://uea.ac.uk/uea-life/norwich-and-beyond)**

You'll follow cobbled lanes to visit iconic medieval halls and watch the latest movie at a modern multiplex cinema. Famous brands coexist on the high street with an ever-changing line-up of pop-ups and independent shops, which are just getting started in the city.

There is a global and diverse community that welcomes the fresh perspectives and vibrancy that students bring, and plenty of food options, whether you're vegan or a meat-eater.

Norwich is a place where industry and ideas can thrive. It was voted one of the best places to live by *The Sunday Times* in both 2019 and 2020. We think that's because we celebrate arts, food, music and literature. Plus, every year, the events calendar for Norwich is epic.



Escaping the city

Beyond the city, UEA is surrounded by some of the UK's most idyllic countryside. Exploring the Norfolk coastline will bring you to beaches and nature reserves and the country's largest seal sanctuary.

You can take a long walk from UEA to a bustling medieval village for lunch or go on a leisurely cycle along beautiful coastal pathways. The great outdoors is on the doorstep of the campus, giving you the opportunity to sail on the River Yare or explore the world-famous Norfolk Broads by boat or on foot. This is an area of outstanding natural beauty, made famous by literature. It has been a source of inspiration to many writers, poets and artists through the years.

It's a fascinating landscape that provides opportunities for a variety of hobbies and activities. Norfolk is also home to many interesting towns: Cromer - which inspired Arthur Conan Doyle, Great Yarmouth - which features in David Copperfield, and South Quay - described by Daniel Defoe as the 'finest in England, if not the world'. Norwich is Norfolk's beating heart, while the rest of the county is a treat for the soul.



Norwich: student view

Name:
Alejandra

From:
Madrid, Spain

Studying:
Art History
with Gallery and
Museum Studies

Instagram:
@giin_25

**Chat to real
UEA students:**

[uea.ac.uk/
ask-a-student](https://uea.ac.uk/ask-a-student)

Coming from a big city, I didn't know if Norwich would feel too small, but it's so lively and full of contrasts.

It's a vibrant and open-minded city that encourages diversity: great for someone in the LGBTQ+ community.

I love exploring the urban art around the city, and have tried different cafes all over Norwich. There is so much on offer and apart from the well-known venues, Norwich is full of hidden gems such as the plantation garden.

It is such a creative place and you never stop discovering new things.

**Read more student
guides to Norwich:**

[uea.ac.uk/uea-life/norwich
-and-beyond#students](https://uea.ac.uk/uea-life/norwich-and-beyond#students)





This is _____'s UEA

There's so much to do when you live in Norwich. Which of our students' top picks below would you like to visit?

Norwich:

- ☐ **The Lanes** for independent shops and stylish boutiques
- ☐ **Mousehold Heath** for green spaces and relaxing walks
- ☐ **The covered market** for street food and bric-a-brac
- ☐ **Riverside** for IMAX, bowling, trampolining and restaurants
- ☐ **Chantry Place** for big brands and high-street names
- ☐ **St. Benedicts Street** for trendy bars and restaurants

Norfolk:

- ☐ **Wells-next-the-Sea** for windswept natural beauty
- ☐ **The Broads** for day boat trips
- ☐ **Great Yarmouth** for fun seaside charm
- ☐ **Blakeney Quay** for crabbing and trips to see the seals

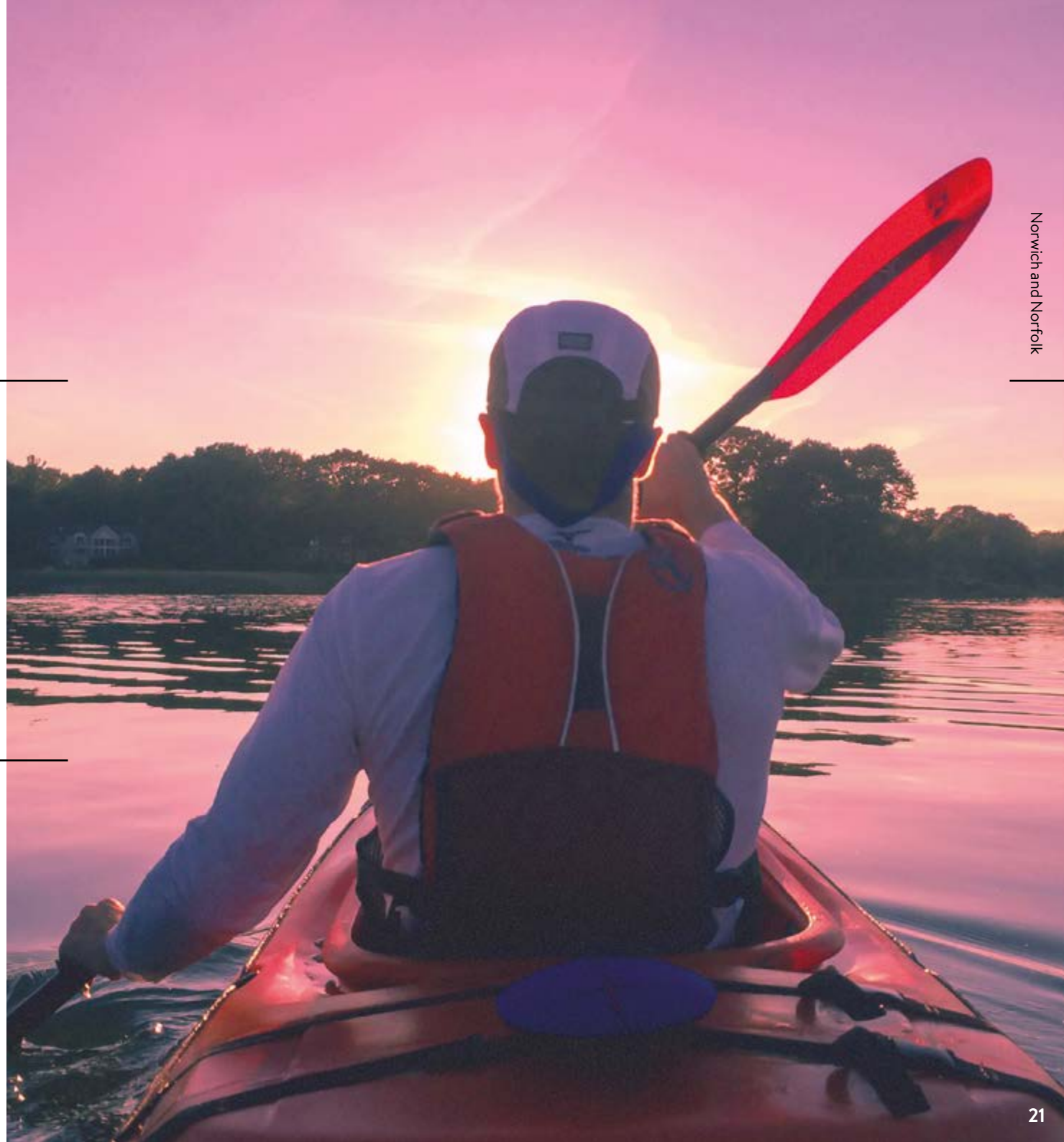
See more student guides to Norwich and Norfolk:

[uea.ac.uk/
uea life/
norwich-and
beyond
#students](https://uea.ac.uk/uea-life/norwich-and-beyond#students)

One of the
**best
places**
to live in the UK
The Sunday
Times 2020

One of the most
**climate-
friendly**
English cities
Friends of
the Earth 2019

The top vegetarian
and most
**vegan-
friendly**
city in the UK
HuffPost 2019



UEA – the heart of the action

UEA campus sits on the edge of Norwich, sandwiched between the city centre and the River Yare. Getting around is easy, whether you live on campus or commute to study – there are lots of ways to travel and many different routes to explore.

You could take a boat to a countryside pub, or catch a taxi to the theatre in town. There are buses that go directly to the city centre from the campus, or it's a safe two-mile bike ride. There's a park and ride for students who drive, and a coach pick-up point for anyone travelling further.

It's also easy to explore the towns, city and scenery around Norfolk. London is only two hours away and Cambridge is within easy reach, with direct links to both places by train and coach. There are direct flights to Europe and the rest of the world from Norwich Airport, which is 20 minutes from campus. Students come for a world-class education and they stay in Norwich because, from here, you can go anywhere.





2

Your campus



UEA campus was designed with a vision – to create the ideal community environment. To build a place where work and life are perfectly balanced. To combine cutting-edge technology spaces for learning and a natural, picturesque habitat. To ensure that productivity and inspiration can thrive.



A mini city

We know that, for many students, this will be the first time living away from home, and that's a big step. But all the amenities you're used to are nearby.

Discover more about our campus:

[uea.ac.uk/
uea life/
campus life](https://uea.ac.uk/uea-life/campus-life)

UEA campus is lively and active and there's always something happening. On The Street, you can open a bank account, grab some essentials, do laundry, get your bike fixed or grab a coffee. Nearby, you can register with a doctor or dentist. The campus is inclusive and accessible for everyone. The multifaith centre welcomes denominations from around the world. There are ample spaces to meet inside and out, to study in peace or in a group, and to get some mental and physical space. And the student services team is based here – on hand to make sure you have everything you need to feel and do well.

You might even recognise the Sainsbury Centre, which featured in the latest Marvel films. The campus is full of interesting places and people: students who live here, those who commute and plenty of friendly staff.

Everything you need

The campus here is like a town centre. There are lots of places to choose from when you're meeting friends or getting food. Every taste and meal is catered for right here.

We have more than 15 different places to pick up a coffee or meal, depending on where you are and what you fancy. We're particularly into Zest on The Street – it has a diverse street food menu of 28 cuisines. There's always plenty of variety, but fish and chips every Friday is a given. Hang out in The Square to meet friends, people-watch and soak up university life. Or relax in our green spaces and watch the world go by.

Whether you're after a beautiful view with your panini, a quick cup of (seriously good) coffee on your way to a lecture, or a hot home-prepared dinner to warm you up, you can find it on campus. Whatever you feel like, there's a spot for you.

Campus Kitchen outlets provide sustainable and environmentally friendly menus – good not only for looking after the planet but for students' budgets too.





Fantastic facilities

Students at UEA come here to receive the best possible education, and our primary mission – our first priority – is to provide you with the tools you need to succeed.

Our facilities are cutting edge and we have invested in the very best technology and structures to support your learning.

The Library is open 24/7, providing access to study space, PCs and printing, as well as more than 800,000 books and journals. Our Digital Library gives you even more, with an online catalogue and eBook and journal access from wherever you are in the world.

In our building you can use PCs or wireless to connect to free software and cloud storage, study individually or in groups, and use our study rooms equipped with IT and audiovisual kit. We make sure you have everything you need to make the best use of your study time, with no distractions.

Find out more about our facilities:

[uea.ac.uk/uea-life/
campus-life/campus-facilities](http://uea.ac.uk/uea-life/campus-life/campus-facilities)



Your campus: student view

Name:
Adeolu

From:
London

Studying:
Media Studies

Instagram:
@aj__b

**Chat to real
UEA students:**

[uea.ac.uk/
ask-a-student](https://uea.ac.uk/ask-a-student)

The last year and a bit I have been at UEA have been some of the most fun times in my life.

I have realised my love for nature and connecting with the outdoors – walks by the lake on campus with my girlfriend have been amazing and are now a weekly occurrence.

Everything you need is here, and there is something to suit all my moods. And trips into the city to explore new and unique places to eat has been wonderful – Norwich is a place you want to explore.

**Read more student
guides to our campus:**

[uea.ac.uk/uea-life/
campus-life#students](https://uea.ac.uk/uea-life/campus-life#students)





3

Your student experience



The experiences you have at UEA will extend far beyond your studies. We know that there is life outside the lecture theatres, and that's why we invest in activities and entertainment as well as libraries and classrooms. Making sure your experience at UEA is a good one is a vital measure of our success.



Life beyond lectures

When you join us at UEA, you become part of a community. We are here to help you make friends, find hobbies and pursue your interests.

The wide range of extracurricular activities available to you spans everything from sports and events to clubs and societies. We're confident that you will find your passion. For anyone who is bringing something new to the campus, there's also the potential to start a club of your own. Joining in is a really good way to get to know people and we've designed things so that this is as easy and welcoming as possible.

This should be the most exciting part of the year, but we know that first step can be daunting. The Students' Union team is here to make sure you feel at home, with access to activities you love and people you can relate to. You'll always get a warm welcome and might make some like-minded friends along the way.

Find out more:

uea.ac.uk/uea-life

Students' Union

The Students' Union (SU) at Union House is a hive of activity designed to provide a social hub for all our students.

The venue has a massive calendar of free events and activities, three bars, global food, a live music venue, meeting rooms, community spaces and a hub of student support services.

Every student who joins us is automatically signed up, so you're already a member when you arrive. The main purpose of the SU is to represent students. That means socially, academically and personally. They're literally here for you, on your side, working closely with the Schools and Faculties so that you're always supported. They can help you with professional support on anything academic, or housing or welfare-related, as well as the fun stuff.

Find out more:

uea.su





This is _____'s UEA

What are the most important things you want on campus?

- ☐ Shops for essentials
- ☐ Cafes and social spaces
- ☐ Entertainment venues

- ☐ Sports facilities
- ☐ Greenery
- ☐ Library
- Other: _____

What will you get involved in at UEA outside of your studies?

What societies and clubs will you look into and join or set up?

What else will make your student experience special?

Have more questions about our campus? Why not speak to a UEA student:

[uea.ac.uk/ask-a student](https://uea.ac.uk/ask-a-student)



Clubs and societies

Joining a club or society is the perfect way to meet new people with a shared interest or hobby. Both clubs and societies are open to anyone who wants to join.

There are more than 250 societies at UEA. The range is massive – from arts and anime to skateboarding, politics and Pokémon. There are also almost 60 sports clubs, from American football to martial arts, watersports and yoga. You can meet up to discuss or explore, practise and engage. This is a great way to celebrate your interests and broaden your horizons. Clubs and society groups are integral to the social calendar at UEA, hosting events and activities open to everyone. Even if you don't feel like committing to a club, you can attend dinners, street markets, fun runs and loads more throughout the year to meet the people involved.

We also help student communities to set up and run their own clubs and societies – so, if you have an idea for something new, you know where to come.

Find out more:

uea.su/opportunities



Your student experience: student view

Name:
Chris

From:
Oxfordshire

Studied:
History and Politics

Career:
Smart Cities
Reporter,
Industry Drive,
Washington D.C.

**Chat to real
UEA students:**

[uea.ac.uk/
ask-a-student](https://uea.ac.uk/ask-a-student)

From my first visit to UEA, I was really impressed with how friendly everyone was. My course was exactly what I wanted. I got involved in baseball; I liked the teamwork and camaraderie, and it gave me something to do at the weekends.

I also worked at Concrete, the student newspaper – I wrote about lots of things, edited and took the lead at times. It was absolutely the best thing I did at UEA and the work I did there has definitely helped me in my career.

I'd definitely recommend getting involved in as much as possible – you never know how it's going to turn out.

Find out more about student life:
uea.ac.uk/uea-life





Entertainment

Massive gigs, A-list line-ups, parties, music, cinema, dance – the list is ENORMOUS. Entertainment at UEA is non-stop; there are days out, discussion clubs, talks, sports, shows... there's too much to list, but here's a taste...

Find out more:

**ueaticket
bookings.co.uk/
whats on**

Entertainment means different things to different people, but the SU has something to suit every kind of social butterfly (or social caterpillar).

Previous artists to appear at the SU include Stormzy, Coldplay and Wolf Alice. It hosts more than 50 gigs a year, and the Sainsbury Centre puts on art shows, talks, films and special events. The parties we have are epic, iconic and unforgettable – the Welcome Ball is the first of the year and 3,000 students get involved. We have an annual Derby Day against Essex University. At the end of the year, we wind down with a massive festival-style ball that our graduates remember forever.

And this is just what's happening on campus. Norwich city centre has another even longer list of events to add to your calendar.

Sport and fitness

We've got a dedicated sports department, a Sportspark and the Active Campus initiative to support the pursuit of sport and fitness. We encourage everyone to join in and stay active, whatever you're into.

Find out more about the Sportspark:

sportspark.co.uk

The University Sportspark is a multimillion-pound development with a gymnastics centre and an eight-lane swimming pool.

There is also an international-standard athletics track, a climbing wall, floodlit football pitches, tennis courts and a state-of-the-art fitness gym. The teams, clubs and classes you can join (of which there are more than 300) include the classics like football, cricket and rugby, as well as some more unusual exploits like dodgeball, fencing and Ultimate Frisbee.

All our activities are available to everyone, from amateurs to Olympians. For us, the most important thing is taking part, feeling included and staying healthy.





Support and wellbeing

Your wellness is our top priority (and hopefully yours too). There are loads of teams and services dedicated to every aspect of health, so be sure to use them if you need to.

Find out more:

**[uea.ac.uk/uea/life/
student support](https://uea.ac.uk/uea/life/student-support)**

Your physical wellness is supported by our on-campus medical centre. They have a full range of services and experts, including doctors, physiotherapists and a travel clinic. There's also a dentist and a pharmacy.

Your mental wellness and overall wellbeing is equally vital and there are multiple systems in place to help you thrive. These include settling-in services for when you arrive – like orientation, wellbeing support and faith services – to make sure you're secure and set up, and ongoing support like disability assistance, mental health support and financial advice. There are student and residential life teams who help you navigate the non-academic needs of starting university, and there's a wellbeing team embedded in every Faculty, as well as a Talking Therapies team and a buddy(su) scheme, so you always have someone to talk to.



4

Where to live



Your new home should be somewhere you feel safe, secure and satisfied. You're probably thinking about location, budget and style. Whatever your parameters, there's definitely a spot here to suit you.



Where to live: student view

Name:
Ellie

From:
Suffolk

Studying:
History and Politics

**Chat to real
UEA students:**

[uea.ac.uk/
ask-a-student](https://uea.ac.uk/ask-a-student)

With so many accommodation options, you can choose one that suits your personality. I'm a homebody and enjoy a peaceful place to live, so the UEA Village was definitely right for me.

It felt like a home away from home, and the short stroll to the campus is really nice and woke me up in the mornings!

You meet so many great people through living together, and at UEA in general. I've made great connections with life-long friends, and have really grown into my own person and transitioned into an independent adult.

**Find out what accommodation
is right for you:**

uea.ac.uk/uea-life/accommodation





Your new home

The accommodation range at UEA has something to suit all sorts of needs. You can decide between on or off campus, modern or historical, country or city.

Take a look at all our accommodation options:

uea.ac.uk/uea-life/accommodation

Our options are comfortable, interesting and designed to suit all budgets – it just depends on what you like. According to the NatWest Student Living Index 2020, Norwich is one of the most affordable cities for students, so you're going to get good value whatever you decide.

We have twice won the Whatuni Student Choice award for accommodation, and we also have a Green Gown award for sustainability in the built environment. That's because our most recent buildings have been designed to promote emissions reduction and sustainability. Students who move to the UEA campus can choose between an excellent variety of set-ups and locations. If you have any questions about accommodation choices, you can contact a student adviser or the accommodation team. It's natural to have questions and it's also normal to be excited (or nervous!), especially if this is your first time leaving home.

Campus couch or city mouse?

The Ziggurats are the iconic flats you'll probably recognise from images of UEA. They are one of many on-campus options and they offer stunning views and a variety of sharing arrangements.

See where you might like to live:

**[uea.ac.uk/uea life/
accommodation/
accommodation
finder](https://uea.ac.uk/uea-life/accommodation/accommodation-finder)**

Suffolk Walk, The University Village, Nelson Court... these are addresses that will soon be familiar to you. But how to choose? Our accommodation finder helps you search through a series of questions: Do you prefer en suite or a shared bathroom? More flatmates or fewer? Start there and also check out video tours of the options available that suit your budget.

If you want to immerse yourself in city life, check out Pablo Fanque House, which is managed by Homes for Students and provides studios and en suite rooms in the heart of Norwich.

Because this is such a student-friendly city, you will also find loads of houseshare options. These are with private landlords, but do contact the Students' Union Advice Centre if you have any questions, or need advice. And commuting to campus is easy if you prefer not to live on site.





5

Careers



At UEA, we prepare our students for life, not just for studies. CareerCentral is a service dedicated to broadening horizons, building experience, exploring options and increasing confidence. Our careers work is twofold – we help you maximise your employability, and we help employers find their ideal employees.



The world of work

UEA students represent an amazing talent pool to future employers and organisations. Our careers support service helps students become some of the most employable graduates around.

CareerCentral offers a massive array of services to help with all aspects of the job search, from finding roles and building CVs to establishing your ideal career pathway. From the first day of study to long past graduation, we work with you to make sure you're aware of options and opportunities.

We know employability is important to you. We have an enormous number of resources both online and in real life.

From the 2017-18 cohort, 80% of our graduates were in 'highly-skilled' work or significant further study just over a year after graduation. Our graduates are excellent ambassadors for the UEA experience.

To find out more, visit:
uea.ac.uk/about/alumni-and-supporters/careers

Build your profile

How can you turn ambition into job offers? The journey to your dream job is likely to be made of many steps. But you can start long before you jump onto the career ladder.

There are loads of opportunities to start building your portfolio of experience and expertise. And there are many ways to showcase your character, interests and abilities to prospective employers before even entering the job market. For those just starting out, we offer guidance in many forms, such as:

- Jobs fairs
- Confidence workshops
- CV-building schemes
- Interview practice
- Mentoring

These are all small steps in the bigger picture. You can also travel abroad, take internships and volunteer. Your time at UEA isn't just about studying – it's about becoming equipped for life and for the work that will fulfil your ambitions.





Study Abroad

Imagine a year in the mountains or a term in Tokyo. Study Abroad is a programme that connects UEA students to the rest of the world.

Chat to the dedicated Study Abroad team to discuss the possibilities and get the most out of your adventure. Find out more:

uea.ac.uk/studyabroad

The benefits of a term, semester or full year abroad are so wide – a chance to make international connections, absorb new perspectives on your subject and discover new ways of learning. The programme at UEA spans the planet, with partnerships with all kinds of universities all over the world. Visit our Study Abroad webpages for some unbelievable photography. This is more than a change of scene – travel abroad is a way to break out of your comfort zone, face your fears and prove to yourself (and future employers) that you're an adventurer, an explorer, a pioneer!

The Study Abroad section on our website also hosts insightful blogs and honest testimonials from students who have spent time abroad. Find out more about their experiences and the lessons they learned.



Careers: student view

Name:
Jessie

From:
Norfolk

Studying:
MNatSci
Natural Sciences

Career:
Postdoctoral
Researcher,
UiT - The Arctic
University of
Norway

**Chat to real
UEA students:**

[uea.ac.uk/
ask-a-student](https://uea.ac.uk/ask-a-student)

I am part of a community exploring the central Arctic Ocean ecosystem, aiming to guide society in future decisions regarding climate change.

My degree at UEA put me in close contact with a wide network of researchers, many of whom are passionate about making a positive impact on the world. I only had to ask during my undergraduate degree, and I was given many opportunities to be part of exciting, meaningful research.

Despite working in some of the most remote parts of the planet, I still find myself collaborating with the connections I made while I was at UEA.

**Discover more about
our careers support:**
[uea.ac.uk/about/alumni-
and-supporters/careers](https://uea.ac.uk/about/alumni-and-supporters/careers)





6

Research with impact



Research is about inspiration, learning, flexing your curiosity, applying imagination and, with us behind you, contributing solutions to life's most important challenges. UEA is an exciting place to be – a place where your work can and will have a tangible impact. Join us at the forefront of global research.



Thinking Without Borders

Research

Thinking Without Borders is the name we've given to the combined projects happening at UEA. It describes our approach to bringing together disciplines in new and exciting ways to address existing and emerging global challenges.

Find out more about Thinking Without Borders at:

uea.ac.uk/thinking-without-borders

We have some of the world's finest facilities and brightest minds working together every day to discover new ways to change the world for the better. Whether it's through policy change, research and development of technology, working with organisations like the British Red Cross to get clean water to children, or contributing to the Intergovernmental Panel on Climate Change (IPCC) with trusted climate change data.

Research at UEA doesn't happen in isolation – it's not just teachers and students tinkering with ideas. This is the combination of many departments, organisations, companies, industries, groups and individuals working together and providing real insights and solutions to critical global problems. Our research home is Norwich, but we make waves around the world.

What will you do?

What is your area of interest? Is it carbon, water, wars or words? Are you data-driven or intrigued by ice? Given the resources, what would you do?

- We can show the connection between carrying water and educational inequality.
- Of all of the universities in the world, we've made the most substantial and sustained contribution to the IPCC across disciplines.
- Our lab technicians saved us 60,000 litres of water a year by pioneering a way to adapt condensers in our chemistry and pharmacy labs.
- We have a silent fleet of underwater robots, slowly revealing the ocean's secrets hundreds of metres below the surface.
- We impact on a national level through influencing Government and policymakers to safeguard children.





Prof Ben Garrod,
Professor of Evolutionary
Biology and Science
Engagement. Biologist,
conservationist,
author and award-
winning broadcaster.

Led by experts

Research

The lecturers and teachers that you'll meet are world experts. They join us at UEA to facilitate your learning journey, and both your personal and professional development.

Learning here isn't a singular purpose – it's a process that spans many opportunities, maximising your experience. The long-established links we have with international organisations and research councils around the world give you instant access to ideas, people and institutes.

You will meet and mingle with experts and groundbreaking thinkers, who will welcome your fresh perspective. It's our people that make UEA unique. People like you, who aren't scared to push things forward. Are you ready to follow in the footsteps of Nobel Prize winners like geneticist Sir Paul Nurse and novelist Sir Kazuo Ishiguro?

Our research is in the top 50 worldwide (Times Higher Education World University Rankings 2019) and **Norwich is a top 10 UK city for highly cited researchers** (Clarivate Analytics 2018).



Research: student view

Name:
Darrell

From:
Norfolk

Studying:
Biological Sciences

Career:
Lecturer

**Chat to real
UEA students:**

[uea.ac.uk/
ask-a-student](https://uea.ac.uk/ask-a-student)

I came to UEA because lectures and practical sessions were led by scientists at the forefront of their respective fields. It meant I could study at the absolute limit of our life sciences knowledge, while also learning the basics.

I didn't know what career I wanted when I started, but in my second year I attended a lecture that blew my mind.

After the lecture, I started working in the Professor's lab in my spare time because I was so inspired.

It was thanks to that experience that I'm now a research active Lecturer myself, and have recently had a paper published that works towards helping identify and treat childhood bone cancer.

Find out more about Darrell's research:

[uea.ac.uk/stories/
uea-alumni-in-2020-part-2](https://uea.ac.uk/stories/uea-alumni-in-2020-part-2)



Facilities and resources

UEA is at the heart of the Norwich Research Park, which is one of Europe's largest collaborative research sites and home to some of the finest minds and best facilities in the world.

Explore our campus facilities:

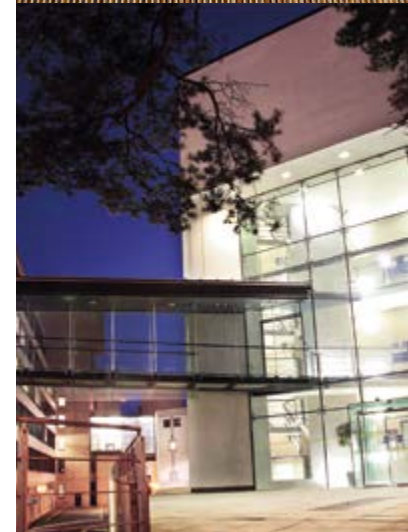
[uea.ac.uk/uea life/campus life/campus facilities](https://uea.ac.uk/uea-life/campus-life/campus-facilities)

You'll join a thriving community of researchers, innovators and students, working together to develop new knowledge and solutions – fusing the latest thinking from across the sciences, social sciences, medicine, health and arts and humanities. The Park invests more than £130 million in research every year and is a combination of multiple cutting-edge facilities:

- The New Science Building for science and engineering
- Quadram Institute – a centre for food and health research
- Sleep and Brain Research Unit
- Bob Champion Research and Education Building for cancer, physiological and deficiency disease research laboratories
- Bespoke television studio and finishing suites

- The Zuckerman Institute for Connective Environmental Research (ZICER)
- The Centre for Ocean and Atmospheric Sciences (COAS)
- The Biomedical Research Centre (BMRC) and imaging suites
- Drama studio and music centre
- Two new laboratories for energy research
- Productivity East – the £7.4 million home for engineering, technology and business management, which opens in summer 2021.

Check out the virtual tour at:
uea.ac.uk/about/engineering/productivity-east-virtual-tour





7

The essentials



On the next few pages, you will find the information you need to start your UEA journey. But if you're unsure or need more detail, please get in touch. Our current students are available through 'Ask a Student' on our website to answer questions about university life. And 'Ask an Academic' gives you a direct line to course leaders who can talk you through your choices, and advisers to help you with the nitty-gritty detail.

Visiting us

Join us for
an open day:

Sat 3
July 2021

Sat 4
September 2021

Sat 23
October 2021

Sat 20
November 2021

Find out more:

uea.ac.uk/visit

Open days are a chance to meet staff and students and have a chat about what they love most about UEA.

You can find out more about your chosen subject, explore the campus and look around some of the facilities. In 2021, some elements of the open days will be virtual and some will be in person – but, either way, you'll be able to discover everything UEA has to offer.

If you are offered a place, you will also receive an invitation to your Applicant Day. This is an exclusive opportunity to take a tour around our diverse campus and find out more about your new home and School of Study. Applicant Days are also a great chance to explore the city and surrounding neighbourhood.





This is _____’s UEA

Choosing the right university is tough – so make sure your thoughts are clear before you start looking.

What are the key things you want your course to offer?

What facilities do you need, and does UEA have them?

Here are a few things our student editors recommend you make time for at an open day:

- | | |
|--|--|
| <input type="checkbox"/> Check out the Library | <input type="checkbox"/> Go to the Sportspark |
| <input type="checkbox"/> Visit the Sainsbury Centre and the LCR | <input type="checkbox"/> Try and find the buildings you’d be studying in |
| <input type="checkbox"/> Watch out for the statues around campus | |

Discover more information on making the right decision:

uea.ac.uk/study/information-for/young-people/webinars

Step 1

Understanding the fees

Likely tuition fee cost per year:
£9,250*

Earnings per year before you start paying back loans:
£27,295 (from April 2021)

Example repayment:
£20 per month (based on illustrative earnings of £30,000 pa)

The price of going to university is split between course fees and living costs. UEA fees are roughly £9,250 per year, depending on inflation.* UK students don't pay fees up front. Instead, they will form your tuition fee loan, which you only repay once you've graduated and have started earning above a certain amount (£27,295 from April 2021).

Living costs are also going to be part of your everyday life. They include the basics like rent, bills, textbooks, food, drink and travel, but also tickets, clothes, subscriptions, equipment and all the stuff that keeps you up and active. To help manage those costs, you can apply for a maintenance loan which, like the fees loan, only needs repaying once you are earning above the repayment threshold. The maintenance loan amount will vary depending on your household income.

Living costs vary from person to person and there are lots of money-saving tips and tricks you can check out. At UEA, there's free internet on campus, affordable shops and

1
Understanding the fees

2
Scholarships and bursaries

3
How to apply for your course

The essentials

competitive rents. Norwich is a really good city in terms of value (it's in the top 10 for affordability in the NatWest Student Living Index 2020). You can also access CareerCentral for flexible jobs that will help to keep your daily finances ticking over.

This might be your first time taking loans out and that can be daunting. In the long term, your student loan won't affect your credit rating and repayments will only kick in when you can afford it.

Find out more about your funding options:

[uea.ac.uk/study/fees and funding/funding options](https://uea.ac.uk/study/fees-and-funding/funding-options)

Find out more and talk to other students and advisers about how loans are managed and what you're entitled to:
student.finance@uea.ac.uk

***Please note** that tuition fees increase annually for all students (UK undergraduate fees, whose rates are regulated by the UK Government, are amended in line with any alteration advised by the UK Government). For subsequent years of study, fee increases will not exceed 4% or the percentage increase of the appropriate UK Government regulated fee.

Step 2

Scholarships and bursaries

Finance shouldn't be a barrier for students to excel and we offer bursaries, prizes and scholarships to help students realise their potential and reward excellence.

If you're an aspiring athlete, have a passion for music, excel in your chosen subject or just need some extra support, we have funding options to help you.

Bursaries are means-tested, non-repayable financial support provided by the University, based on your household income. At UEA, you do not need to apply for a bursary – it is awarded automatically using the information we receive from student finance.

The range of scholarships available depends on your skillset and specialisms and they can be applied for even if you're receiving a bursary.



The essentials

The scholarship finder on our website asks a few simple questions about your course type, country and when you're planning to study and will help you discover any applications you could make.

Each Faculty has funds available to encourage, support and assist their best and brightest students and to ensure fair access to education.

We also give £3,000 scholarships to reward high performance in research projects – for example, the Extended Project Qualification (EPQ).

There are dozens of scholarships, bursaries and prizes, so make sure you check out all our options using our interactive tool to find those that are relevant to your skills and experience.

For more on our scholarships, check out the scholarship finder tool on our website:

uea.ac.uk/scholarships

Step 3

How to apply for your course

Roughly 4,000 new students join us each year and each application is judged on its own merit.

You need to apply to UEA online through the Universities and Colleges Admissions Service (UCAS). Once we've received your application, we'll review your academic record along with your personal statement, which is an opportunity for us to find out more about what makes you tick. We want to know about your skills and experience and how you'll fit in here at UEA.

We carefully review all applications and decide whether to send an offer or to invite you to an interview or audition. These are a chance for us to get to know you better (and you us!).

You'll find typical application requirements in the course descriptions, but remember that we welcome applications from students with a range of qualifications. Unless you've already got your exam results, offers are likely to be conditional.

1
Understanding
the fees

2
Scholarships
and bursaries

3
How to
apply for
your course

The essentials

We base these offers on your circumstances and the demand for your course. As long as you get the grades in your conditional offer, and make us your firm choice, you're guaranteed a place at UEA.

Find out more about applying through Clearing, deferring a place, or the application process on the website, or get in touch with our advisers.

Remember, we want to meet you – we're excited by the new students that join us every year and we're keen to welcome you aboard.

Get more advice on writing your personal statement:

uea.ac.uk/apply

Speak to us on Live Chat on our website, Monday to Friday, 9.30am to 4.30pm, about any questions you have about this year's admissions.

Or email admissions@uea.ac.uk for any other queries.



The essentials: student view

Name:
Molly-Rose

From:
Ramsgate, Kent

Studying:
English Literature
and Creative
Writing

**Chat to real
UEA students:**
[uea.ac.uk/
ask-a-student](https://uea.ac.uk/ask-a-student)

When choosing my university, I wanted to find out everything I could about the ones I was interested in. Going to open days helped me decide that UEA was right for me.

Everyone was so friendly, and I love that everything was on campus. There's a real community feel here.

One thing I looked into at the open day was the financial support I could receive; it's always good to check ahead and there's lots of scholarship and bursary options.

It's always good to ask questions, and joining an open day made the whole process simpler for me.

Check out our upcoming open days:
uea.ac.uk/visit





Faculty of Arts and Humanities

The essentials

The study of Arts and Humanities is all about exploring how humans create and shape their shared world, and everything in it – language and literature, culture and society, film and media, and society and government.

In studying these things at UEA, we cultivate inclusivity, as well as ambition. We work with arts, media, heritage and political organisations, both nationally and internationally, to help reinvent our world for the better.

We give you the confidence to shape your own future and make your mark on the world, because some of tomorrow's careers don't even exist yet. We are a place for the courageous and the compassionate – for those who can think critically, communicate clearly, act creatively and listen carefully.

Does that sound like you?

Our schools:

Art, Media and
American Studies

History

Interdisciplinary
Institute for
the Humanities

Literature,
Drama and
Creative Writing

Politics,
Philosophy,
Language and
Communication
Studies

**View all of our
courses at:**

[uea.ac.uk/
course-finder](http://uea.ac.uk/course-finder)



Faculty of Medicine and Health Sciences

The study of medicine and health centres around our common vision and united sense of purpose – to be part of the challenge to improve healthcare, answer humanity's most pressing questions and work to cure the world.

The culture in this Faculty is supportive and the environment we create together encourages excellence, curiosity and compassion.

We work alongside the NHS and other research partners (including the Norwich Research Park) and our teaching has a strong focus on early clinical placements, which gives our students patient contact and nurtures talent from the outset. The Faculty of Medicine and Health Sciences is designed to elevate and maximise education, collaboration and innovation.

99% of Medicine and Health Sciences graduates were in employment or further study 15 months after graduating (2017–18 cohort).

Our schools:

Norwich
Medical School

Health Sciences

View all of our courses at:

[uea.ac.uk/
course-finder](http://uea.ac.uk/course-finder)



Faculty of Science

The study of science is about expanding minds and being part of the next generation of people to consider some of humanity's biggest questions.

The Faculty of Science is the combination of seven Schools, as well as research across a huge array of institutes, organisations and projects.

The Faculty and the Schools that build it look at everything from the smallest microbe to the expanse of the universe. Science is about exploration, discovery, theory and practice.

The Faculty of Science is big, it's multidisciplinary and it's strengthened by the spirit of collaboration. Science has the power to change the world, and so do you.

Our schools:

Biological Sciences

Chemistry

Computing Sciences

Engineering

Environmental Sciences

Mathematics

Pharmacy

View all of our courses at:

uea.ac.uk/course-finder

Over 83% of Science graduates were in professional or managerial careers or further study within 15 months of graduating (2017–18 cohort).



Faculty of Social Sciences

The essentials

The Faculty of Social Sciences is home to seven schools of study that span the human experience. Joining the Faculty means that you've chosen to engage with the systems that make civilisations work.

Will you push things forward? Challenge current thinking? Find, develop and use your voice? Will you help us to seek out opportunities and ways to use your research to make an impact on individuals, communities, policymakers and companies in the UK and around the world?

If your answer to these questions is yes, then you're ready to join us on a mission to make a difference through education, reasoning, enterprise and engagement. Join us in our internationally important research.

Our schools:

Economics

Education and
Lifelong Learning

International
Development

Law

Norwich
Business School

Psychology

Social Work
(incl. Sociology)

**View all of our
courses at:**

[uea.ac.uk/
course-finder](https://uea.ac.uk/course-finder)

Courses A–C

	A-Level Entry	IB Entry	BTEC Entry	Award	Key
Accounting and Finance	ABB	32	DDM	BSc	
Accounting and Finance with a Year Abroad	ABB	32	DDM	BSc	A
Accounting and Finance with a Year in Industry	ABB	32	DDM	BSc	I
Accounting and Management	ABB	32	DDM	BSc	
Accounting and Management with a Year Abroad	ABB	32	DDM	BSc	A
Accounting and Management with a Year in Industry	ABB	32	DDM	BSc	I
Actuarial & Data Science	AAA	34	DDD	MMath	
Actuarial Science with a Year Abroad	AAB	33	DDD	BSc	A
Actuarial Science with a Year in Industry	AAB	33	DDD	BSc	I
Actuarial Science	AAB	33	DDD	BSc	
Adult Nursing	BBC	30	DMM	BSc	
American and English Literature - 3 years	BBB	31	DDM	BA	S
American and English Literature - 4 years	BBB	31	DDM	BA	A
American History	BBB	31	DDM	BA	A
American Literature with Creative Writing	AAB	33	DDD	BA	A
American Studies - 3 years	BBB	31	DDM	BA	S
American Studies - 4 years	BBB	31	DDM	BA	A
American Studies with a Foundation Year	CCC	28	MMM	BA	F
Archaeology, Anthropology and Art History	ABB	32	DDM	BA	S
Archaeology, Anthropology, & Art History with a Year Abroad	AAB	33	DDD	BA	A
Biochemistry	BBB	31	DDM	BSc	
Biochemistry	AAB	33	DDD	MSci	
Biochemistry with a Foundation Year	CCC	28	MMM	BSc	F
Biochemistry with a Year Abroad	AAB	33	DDD	MSci	A
Biochemistry with a Year in Industry	ABB	32	DDM	BSc	I
Biological Sciences	BBB	31	DDM	BSc	
Biological Sciences with a Foundation Year	CCC	28	MMM	BSc	F
Biological Sciences with a Year Abroad	ABB	32	DDM	BSc	A
Biological Sciences with a Year in Industry	ABB	32	DDM	BSc	I
Biological Sciences	AAB	33	DDD	MSci	
Biomedicine	ABB	32	DDM	BSc	
Broadcast and Multi-media Journalism	BBB	31	DDM	BA	

Key	A	F	I	S
	Year Abroad option	Foundation Year	Year in Industry/ Placement Year option	Semester Abroad option

2022 entry

	A-Level Entry	IB Entry	BTEC Entry	Award	Key
Business Analytics and Management	ABB	32	DDM	BSc	
Business Analytics and Management with a Year Abroad	ABB	32	DDM	BSc	A
Business Analytics and Management with a Year in Industry	ABB	32	DDM	BSc	I
Business and Human Resource Management	ABB	32	DDM	BA	
Business and Human Resource Management with a Year Abroad	ABB	32	DDM	BA	A
Business and Human Resource Management with a Year in Industry	ABB	32	DDM	BA	I
Business Economics	ABB	32	DDM	BSc	
Business Economics with a Placement Year	AAB	33	DDD	BSc	I
Business Economics with a Year Abroad	AAB	33	DDD	BSc	A
Business Finance and Economics	ABB	32	DDM	BSc	
Business Finance and Economics with a Placement Year	AAB	33	DDD	BSc	I
Business Finance and Economics with a Year Abroad	AAB	33	DDD	BSc	A
Business Finance and Management	ABB	32	DDM	BSc	
Business Finance and Management with a Year Abroad	ABB	32	DDM	BSc	A
Business Finance and Management with a Year in Industry	ABB	32	DDM	BSc	I
Business Information Systems	BBB	31	DDM	BSc	
Business Information Systems with a Year in Industry	BBB	31	DDM	BSc	I
Business Management	ABB	32	DDM	BA	
Business Management with a Year Abroad	ABB	32	DDM	BA	A
Business Management with a Year in Industry	ABB	32	DDM	BA	I
Chemistry	BBB	31	DDM	BSc	
Chemistry	AAB	33	DDD	MChem	
Chemistry with a Year Abroad	AAB	33	DDD	MChem	A
Chemistry with a Foundation Year	CCC	28	MMM	BSc	F
Chemistry with a Year in Industry	AAB	33	DDD	MChem	I
Children's Nursing	BBB	31	DDM	BSc	
Cognitive Psychology	ABB	32	DDM	BSc	
Cognitive Psychology	AAB	33	DDD	MSci	
Cognitive Psychology with a Placement Year	AAB	33	DDD	BSc	I
Cognitive Psychology with a Year Abroad	ABB	32	DDM	BSc	A
Computational Psychology	AAB	33	DDD	BSc	

Courses C—G

	A-Level Entry	IB Entry	BTEC Entry	Award	Key
Computer Systems Engineering	BBB	31	DDM	BEng	
Computer Systems Engineering with a Year in Industry	BBB	31	DDM	BEng	I
Computing and Creative Technologies	BBB	31	DDM	BSc	
Computing and Creative Technologies with a Year in Industry	BBB	31	DDM	BSc	I
Computing Science	BBB	31	DDM	BSc	
Computing Science	AAB	33	DDD	MComp	
Computing Science with a Foundation Year	CCC	28	MMM	BSc	F
Computing Science with a Year in Industry	BBB	31	DDM	BSc	I
Computing Science with a Year Abroad	AAB	33	DDD	MComp	A, S
Creative Writing and English Literature	AAA	34	DDD	BA	S
Culture, Literature and Politics	BBB	31	DDM	BA	S
Developmental Psychology	ABB	32	DDM	BSc	
Developmental Psychology	AAB	33	DDD	MSci	
Developmental Psychology with a Placement Year	AAB	33	DDD	BSc	I
Developmental Psychology with a Year Abroad	ABB	32	DDM	BSc	A
Drama	BBB	31	DDM	BA	S
Drama and Creative Writing	ABB	32	DDM	BA	S
Ecology and Conservation	BBB	31	DDM	BSc	
Ecology and Conservation with a Year Abroad	ABB	32	DDM	BSc	A
Economics	ABB	32	DDM	BSc	
Economics with a Placement Year	AAB	33	DDD	BSc	I
Economics with a Year Abroad	AAB	33	DDD	BSc	A
Economics and Finance	ABB	32	DDM	BSc	
Economics and Finance	AAB	33	DDD	MSci	
Economics and Finance with a Placement Year	AAB	33	DDD	BSc	I
Economics and Finance with a Year Abroad	AAB	33	DDD	BSc	A
Economics with Accountancy	ABB	32	DDM	BSc	
Economics with Accountancy with a Placement Year	AAB	33	DDD	BSc	I
Economics with Accountancy with a Year Abroad	AAB	33	DDD	BSc	A
Education	BBB	31	DDM	BA	

Key

A
Year Abroad
option

F
Foundation
Year

I
Year in Industry/
Placement
Year option

S
Semester
Abroad option

2022 entry

	A-Level Entry	IB Entry	BTEC Entry	Award	Key
Education with a Year Abroad	BBB	31	DDM	BA	A
Energy Engineering	BBB	31	DDM	BEng	
Energy Engineering with Environmental Management	ABB	32	DDM	BEng	
Energy Engineering	AAB	33	DDD	MEng	
Engineering	BBB	31	DDM	BEng	
Engineering	AAB	33	DDD	MEng	
Engineering with a Foundation Year	CCC	28	MMM	BEng	F
Engineering with a Year in Industry	BBB	31	DDM	BEng	I
Engineering with a Year in Industry	AAB	33	DDD	MEng	I
English Literature	ABB	32	DDM	BA	S
English Literature with a Foundation Year	CCC	28	MMM	BA	F
English Literature and Drama	BBB	31	DDM	BA	S
English Literature and Philosophy	BBB	31	DDM	BA	S
English Literature with Creative Writing	AAA	34	DDD	BA	S
Environmental Sciences	BBB	31	DDM	BSc	
Environmental Sciences	AAB	33	DDD	MSci	A
Environmental Sciences with a Foundation Year	CCC	28	MMM	BSc	F
Environmental Sciences with a Placement Year	ABB	32	DDM	BSc	I
Environmental Sciences with a Year Abroad	AAB	33	DDD	MSci	A
Environmental Sciences and International Development	BBB	31	DDM	BSc	
Film and Television Production	BBB	31	DDM	BA	S
Film and Television Studies	BBB	31	DDM	BA	S
Film and Television Studies with a Foundation Year	CCC	28	MMM	BA	F
Film Studies and English Literature	BBB	31	DDM	BA	S
Geography	BBB	31	DDM	BA	
Geography	BBB	31	DDM	BSc	
Geography with a Placement Year	ABB	32	DDM	BA	I
Geography with a Placement Year	ABB	32	DDM	BSc	I
Geography and International Development	ABB	32	DDM	BA	
Geography and International Development with a Foundation Year	CCC	28	MMM	BA	F
Geography and International Development with a Placement Year	ABB	32	DDM	BA	I
Geography and International Development with Overseas Placement	ABB	32	DDM	BA	

Courses G—L

	A-Level Entry	IB Entry	BTEC Entry	Award	Key
Geography and International Development with Year Abroad	ABB	32	DDM	BA	A
Geology with Geography	BBB	31	DDM	BSc	
Geology with Geography	AAB	33	DDD	MSci	
Geology with Geography with a Placement year	ABB	32	DDM	BSc	I
Geology with Geography with a Year Abroad	AAB	33	DDD	MSci	A
Geophysics	ABB	32	DDM	BSc	
Geophysics	AAB	33	DDD	MSci	
Geophysics with a Placement Year	ABB	32	DDM	BSc	I
Geophysics with a Year Abroad	AAB	33	DDD	MSci	A
History	BBB	31	DDM	BA	S
History with a Foundation Year	CCC	28	MMM	BA	F
History and Film Studies	BBB	31	DDM	BA	S
History and History of Art	ABB	32	DDM	BA	S
History and Politics	ABB	32	DDM	BA	S
History of Art	ABB	32	DDM	BA	S
History of Art with a Foundation Year	CCC	28	MMM	BA	F
History of Art with a Year Abroad	AAB	33	DDD	BA	A
History of Art and Literature	ABB	32	DDM	BA	S
History of Art with Gallery and Museum Studies	ABB	32	DDM	BA	S
Intercultural Communication with Business Management	BBB	31	DDM	BA	S
Intercultural Communication with Business Management with a Foundation Year	CCC	28	MMM	BA	F
International Business Management	ABB	32	DDM	BA	
International Business Management with a Year Abroad	ABB	32	DDM	BA	A
International Business Management with a Year in Industry	ABB	32	DDM	BA	I
International Development	ABB	32	DDM	BA	
International Development with a Foundation Year	CCC	28	MMM	BA	F
International Development with a Placement Year	ABB	32	DDM	BA	I
International Development with Overseas Placement	ABB	32	DDM	BA	
International Development with a Year Abroad	ABB	32	DDM	BA	A

Key	A	F	I	S
	Year Abroad option	Foundation Year	Year in Industry/ Placement Year option	Semester Abroad option

2022 entry

	A-Level Entry	IB Entry	BTEC Entry	Award	Key
International Development and the Environment	ABB	32	DDM	BSc	
International Development and the Environment with a Placement Year	ABB	32	DDM	BSc	I
International Development and the Environment with Overseas Placement	ABB	32	DDM	BSc	
International Development and the Environment with a Year Abroad	ABB	32	DDM	BSc	A
International Development Management	ABB	32	DDM	BA	
International Development Management with a Placement Year	ABB	32	DDM	BA	I
International Development Management with a Year Abroad	ABB	32	DDM	BA	A
International Development with Anthropology	ABB	32	DDM	BA	
International Development with Anthropology with a Placement Year	ABB	32	DDM	BA	I
International Development with Anthropology with Overseas Placement	ABB	32	DDM	BA	
International Development with Anthropology with a Year Abroad	ABB	32	DDM	BA	A
International Development with Economics	ABB	32	DDM	BA	
International Development with Economics and Overseas Placement	ABB	32	DDM	BA	
International Development with Economics with a Year Abroad	ABB	32	DDM	BA	A
International Development with Economics with a Placement Year	ABB	32	DDM	BA	I
International Development with Politics	ABB	32	DDM	BA	
International Development with Politics with a Placement Year	ABB	32	DDM	BA	I
International Development with Politics with Overseas Placement	ABB	32	DDM	BA	
International Development with Politics with a Year Abroad	ABB	32	DDM	BA	A
International Relations	BBB	31	DDM	BA	S
International Relations and Modern History	BBB	31	DDM	BA	S
International Relations and Modern Languages	ABB	32	DDM	BA	A
International Relations and Politics	BBB	31	DDM	BA	S
Law	AAB	33	DDD	LLB	
Law with American Law	AAA	34	N/A	LLB	A
Law with Criminology	AAB	33	DDD	LLB	
Law with European Legal Systems	ABB	32	DDM	LLB	A

Courses L–P

	A-Level Entry	IB Entry	BTEC Entry	Award	Key
Liberal Arts	AAB	33	DDD	BA	S
Liberal Arts with a Placement Year	AAB	33	DDD	BA	I
Liberal Arts with a Year Abroad	AAB	33	DDD	BA	A
Literature and History	BBB	31	DDM	BA	S
Marine Sciences	ABB	32	DDM	BSc	
Marine Sciences	AAB	33	DDD	MSci	
Marine Sciences with a Placement Year	ABB	32	DDM	BSc	I
Marine Sciences with a Year Abroad	AAB	33	DDD	MSci	A
Marketing and Management	ABB	32	DDM	BA	
Marketing and Management with a Year Abroad	ABB	32	DDM	BA	A
Marketing and Management with a Year in Industry	ABB	32	DDM	BA	I
Master of Mathematics	AAA	34	DDD	MMath	
Master of Mathematics with a Year Abroad	AAA	34	DDD	MMath	A
Mathematics	AAB	33	DDD	BSc	
Mathematics with a Foundation Year	CCC	28	MMM	BSc	F
Mathematics with a Placement Year	AAB	33	DDD	BSc	I
Media and International Development	ABB	32	DDM	BA	
Media and International Development with a Year Abroad	ABB	32	DDM	BA	A
Media and International Development with a Placement Year	ABB	32	DDM	BA	I
Media and International Development with Overseas Placement	ABB	32	DDM	BA	
Media Studies	BBB	31	DDM	BA	S
Medicine	AAA	36	N/A	MBBS	
Medicine with a Gateway Year	BBB	32	DDM	MBBS	F
Mental Health Nursing	BBC	30	DMM	BSc	
Microbiology	BBB	31	DDM	BSc	
Microbiology with a Placement Year	ABB	32	DDM	BSc	I
Midwifery	ABB	32	DDM	BSc	
Modern History	BBB	31	DDM	BA	S
Modern Language (3 year option French or Spanish)	ABB	32	DDM	BA	S
Modern Language (4 years)	BBB	31	DDM	BA	A

Key	A	F	I	S
	Year Abroad option	Foundation Year	Year in Industry/ Placement Year option	Semester Abroad option

2022 entry

	A-Level Entry	IB Entry	BTEC Entry	Award	Key
Modern Language with Management Studies (4 years)	BBB	31	DDM	BA	A
Modern Languages (Double languages)	BBB	31	DDM	BA	A
Modern Languages with Management Studies (Double languages)	BBB	31	DDM	BA	A
Molecular Biology and Genetics	BBB	31	DDM	BSc	
Natural Sciences	AAA	34	DDD	BSc	
Natural Sciences	A*AA	35	D*DD	MNatSci	
Natural Sciences with a Placement Year	AAA	34	DDD	BSc	I
Natural Sciences with a Year Abroad	A*AA	35	D*DD	BSc	A
Occupational Therapy	BBB	31	DDM	BSc	
Operating Department Practice	BCC	29	DMM	BSc	
Paramedic Science	ABB	32	DDM	BSc	
PE, Sport and Health	ABB	32	DDM	BSc	
Pharmacology and Drug Discovery	BBB	31	DDM	BSc	
Pharmacology and Drug Discovery	AAB	33	DDD	MSci	
Pharmacology and Drug Discovery with a Foundation Year	CCC	28	MMM	BSc	F
Pharmacy	ABB	32	DDM	MPharm	
Pharmacy with a Foundation Year	CCC	28	MMM	MPharm	F
Pharmacy with a Placement Year	ABB	32	DDM	MPharm	I
Philosophy	BBB	31	DDM	BA	S
Philosophy with a Foundation Year	CCC	28	MMM	BA	F
Philosophy and History	ABB	32	DDM	BA	S
Philosophy and Politics	ABB	32	DDM	BA	S
Philosophy, Politics and Economics	ABB	32	DDM	BA	
Philosophy, Politics and Economics with a Placement Year	AAB	33	DDD	BA	I
Philosophy, Politics and Economics with a Year Abroad	AAB	33	DDD	BA	A
Physical Activity and Health	ABB	32	DDM	BSc	
Physical Activity and Health with a Year Abroad	ABB	32	DDM	BSc	A
Physical Education	ABB	32	DDM	BSc	
Physical Education with a Year Abroad	ABB	32	DDM	BSc	A
Physical Education, Sport and Health with a Year Abroad	ABB	32	DDM	BSc	A
Physics	ABB	31	DDM	BSc	
Physics	AAB	33	DDD	MPhys	

Courses P–Z

	A-Level Entry	IB Entry	BTEC Entry	Award	Key
Physics with a Foundation Year	CCC	28	MMM	BSc	F
Physics with a Year Abroad	AAB	33	DDD	BSc	A
Physics with a Year in Industry	AAB	33	DDD	BSc	I
Physiotherapy	AAB	33	DDD	BSc	
Politics	BBB	31	DDM	BA	S
Politics with a Foundation Year	CCC	28	MMM	BA	F
Politics and Digital Cultures	BBB	31	DDM	BA	S
Politics and Economics	ABB	32	DDM	BSc	
Politics and Economics with a Placement Year	AAB	33	DDD	BSc	I
Politics and Economics with a Year Abroad	AAB	33	DDD	BSc	A
Psychology	ABB	32	DDM	BSc	
Psychology with a Year Abroad	AAB	33	DDD	BSc	A
Psychology with a Placement year	AAB	33	DDD	BSc	I
Social Psychology	ABB	32	DDM	BSc	
Social Psychology	AAB	33	DDD	MSci	
Social Psychology with a Year Abroad	ABB	32	DDM	BSc	A
Social Psychology with a Placement Year	AAB	33	DDD	BSc	I
Social Work	BBB	31	DDM	BA	
Society, Culture and Media	BBB	31	DDM	BA	S
Sociology	BBB	31	DDM	BA	
Sociology with a Year Abroad	ABB	32	DDM	BA	A
Speech and Language Therapy	AAB	33	DDD	MSci	
Speech and Language Therapy	ABB	32	DDM	BSc	
Sports Development	ABB	32	DDM	BSc	
Sports Development with a Year Abroad	ABB	32	DDM	BSc	A
Translation and Interpreting with Modern Languages (Double languages)	BBB	31	DDM	BA	A
Translation, Media and Modern Language (4 years)	BBB	31	DDM	BA	A
Translation, Media and Modern Language (3 year option French or Spanish)	ABB	32	DDM	BA	S
Translation, Media and Modern Languages (Double languages)	BBB	31	DDM	BA	A

Please note many of our courses have subject specific requirements. All courses also have a minimum GCSE requirement or equivalent. Please check our website for further details.

Key	A	F	I	S
	Year Abroad option	Foundation Year	Year in Industry/ Placement Year option	Semester Abroad option

Important information

About this brochure

We have taken great care in compiling the information contained in this brochure, which we believe to be accurate at the time of going to press. Occasionally, it may be necessary to make changes – for example to courses, facilities or fees. Examples of such reasons might include a change of law or regulatory requirements, industrial action, lack of demand, departure of key personnel, change in government policy, or withdrawal/ reduction of funding. In addition, the Covid-19 pandemic that was impacting the UK at the time of going to print may also impact the University's ability to deliver courses and other services. Changes may, for example, consist of variations to the content and method of delivery of programmes, courses and other services; the discontinuation of programmes, courses and other services; or the merging or combining of programmes or courses.

The University will endeavour to keep such changes to a minimum, and will also keep prospective students informed appropriately by updating our course information on our website: uea.ac.uk.

No liability for changes outside of our control

Should industrial action or other circumstances beyond the reasonable control of the University occur, and this interferes with the University's ability to deliver services in accordance with the descriptions provided, the University will use all reasonable efforts to minimise disruption as far as it is practicable to do so.

Provided the University complies with its obligations set out here, it shall not be liable to students, applicants or any other person for any loss, costs, charges or expenses arising out of the information set out in our course finder and promotional marketing activity, changes to that information, or any disruption or interference of the type described above.

University terms and conditions, procedures, rules and regulations

If you accept an offer of a place, it will be subject to the University's terms and conditions, the latest version of which is available through our Statutory, Legal and Policies section of our site.

Important information (cont.)

Equal opportunities

UEA operates an equal opportunities admissions policy. It aims to ensure that no applicant will receive less favourable treatment on the grounds of sex, age, marital status, race, colour, nationality, ethnic origin, sexual orientation, or political or religious beliefs. The University welcomes applications from candidates with disabilities. Information contained in this brochure may also be made available in other formats to ensure access for everyone. Please call +44 (0) 1603 593753 to discuss.

Ethical Investment Policy

UEA operates an Ethical Investment Policy.

Images and descriptions used in this guide may include those which pre-dated Covid-19 mitigations, and may not represent short-term restrictions (including face coverings, social distancing, accommodation bubbles and one-way systems) the University is required to undertake to ensure a Covid-secure environment.

Acknowledgements

Produced by UEA Marketing and Communications

Design/content:
psLondon
pslondon.co.uk

Print:
Belmont Press
belmont.co.uk

Photography:
Andi Sapey, Andrew Bourke,
David Drake, Dave Gutridge, David
Kirkham, Duuame Nyiman, Ellen
Weatherly, Joakim Boren, Neil Hall,
Pete Huggins, Ricky-Joe Burrage,
Steve Wright, The Photographic
Unit, Student editors and student
view contributors as featured.

Images: Shutterstock,
Getty Images, Unsplash

Thanks to all of our
#homeofthewonderful
Instagram image contributors.

This prospectus has been printed
on FSC® certified paper, produced
from responsibly managed forests,
using vegetable-based inks.

Produced February 2021.
When you have finished with this
prospectus, please recycle it.

VERSION: ARMUG0321/001

Awarded



**in the Teaching Excellence
Framework 2017–21**

UK Top

25

**The Times/Sunday Times 2021 and
Complete University Guide 2021**

World Top

200

**Times Higher Education
World University
Rankings 2021**

Further information:

Admissions enquiries

T +44 (0) 1603 591515

General enquiries

T +44 (0) 1603 456161

E admissions@uea.ac.uk

W uea.ac.uk

f [ueaofficial](https://www.facebook.com/ueaofficial)

t [@uniofeastanglia](https://twitter.com/uniofeastanglia)

@ [@uniofeastanglia](https://www.instagram.com/uniofeastanglia)

y [ueaofficial](https://www.youtube.com/ueaofficial)